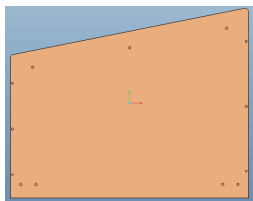


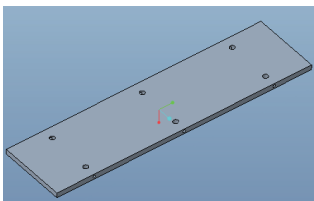
Chute installation instructions

1. Material introduction

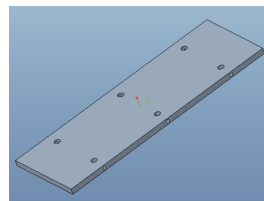
Sort	Part name	Quantity
Attachment	1 Chute bottom plate	1
	2 long side side panels	1
	3 Short side panel	1
	4 slide boards	1
	5 Bottom support plate	2
	6 Chute cover	1
	7 Three-in-one components (1.M6 rubber particle 2. Eccentric wheel 3. Connecting rod)	26



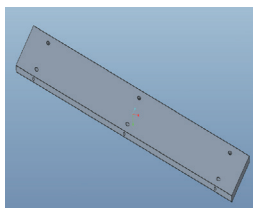
1 Chute bottom plate



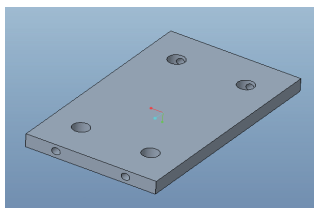
2 long side side panels



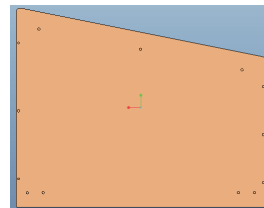
3 Short side panel



4 slide boards



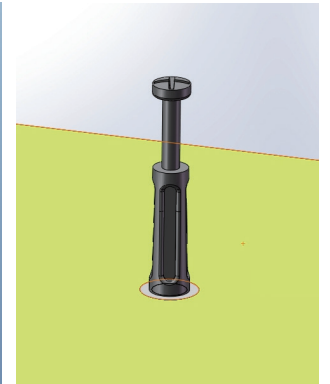
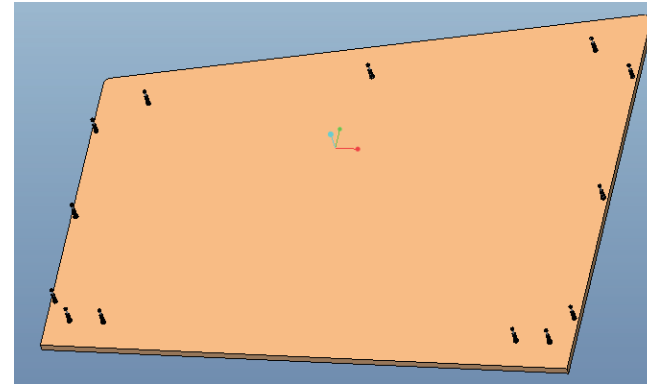
5 Bottom support plate



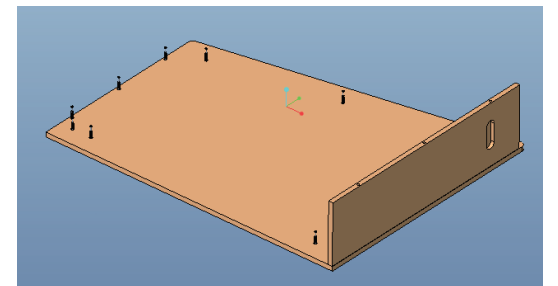
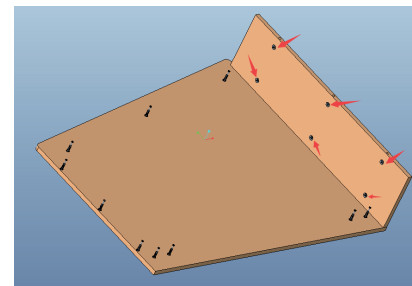
6 Chute cover

2. Chute installation steps:

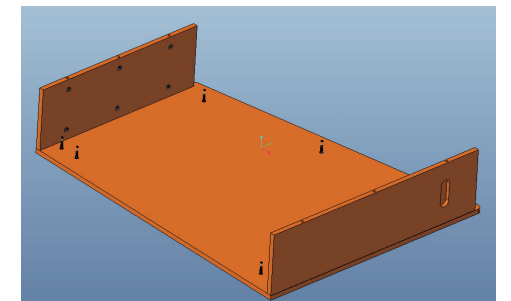
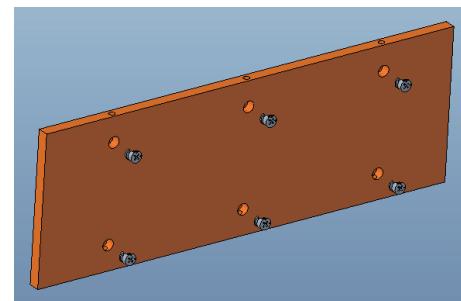
(1) Install 13 M6 rubber particles on the bottom plate of the chute in turn and knock them flat with a rubber hammer, and then install 13 connecting rods and tighten them clockwise, as shown below;



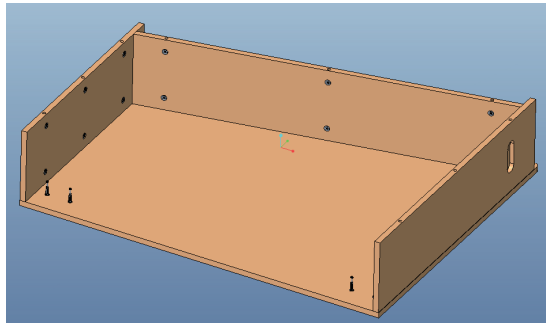
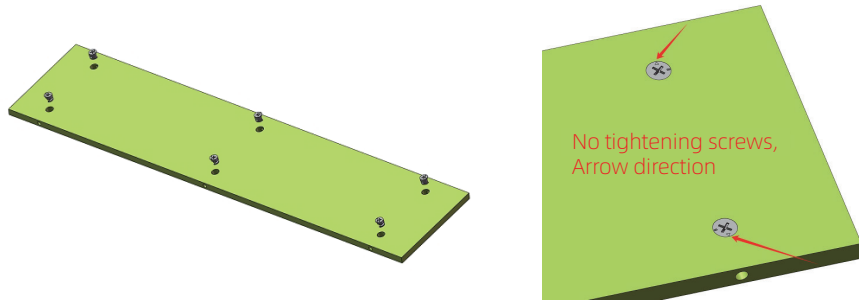
(2) 6 eccentric wheels are installed on the long side panel, as shown below;



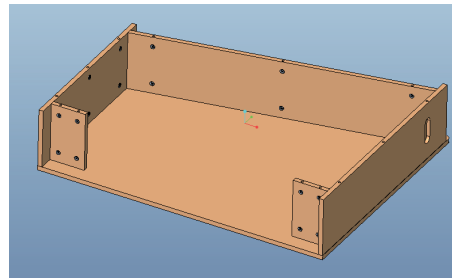
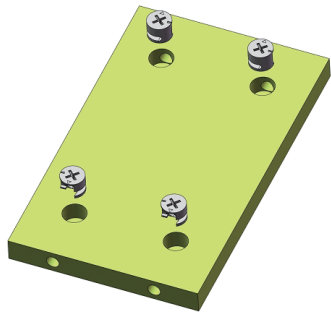
(3) The short side plate is equipped with 6 eccentric wheels, as shown below;



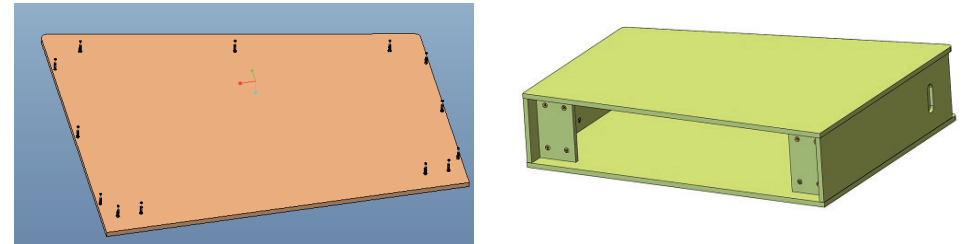
(4) The slide plate is installed with 6 eccentric wheels, as shown below;



(5) The bottom support plate is installed with 4 eccentric wheels, and the arrows are in the direction of the tightening screw holes, as shown below;

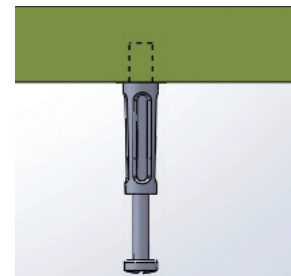


(6) Install 13 M6 rubber pellets in turn on the cover plate of the chute with a rubber hammer, and then install 13 connecting rods and tighten them clockwise; Finally, twist the eccentric arrow in the direction of the tightening screw hole, as shown below;



3. Refer to the three-in-one installation diagram

Before installation



Eccentric arrow alignment, tighten the screws

post-installation

Eccentric rotated 90 degrees counterclockwise, The letter aligns and pulls the screw, that is, it is fixed

