

CINO Imager USB COM Driver Installation Guide

Rev. A

Product : CINO FuzzyScan Imager USB COM Port Emulation Driver USB3600

Revision : 1.00.01

Date : June 09, 2009

Contents of this document:

This document contains the following subjects:

- * System requirements
- * How to install Cino FuzzyScan Imager USB COM Port Emulation Driver
- * When fail to complete the installation on Step 9
- * Verifying installation of the driver

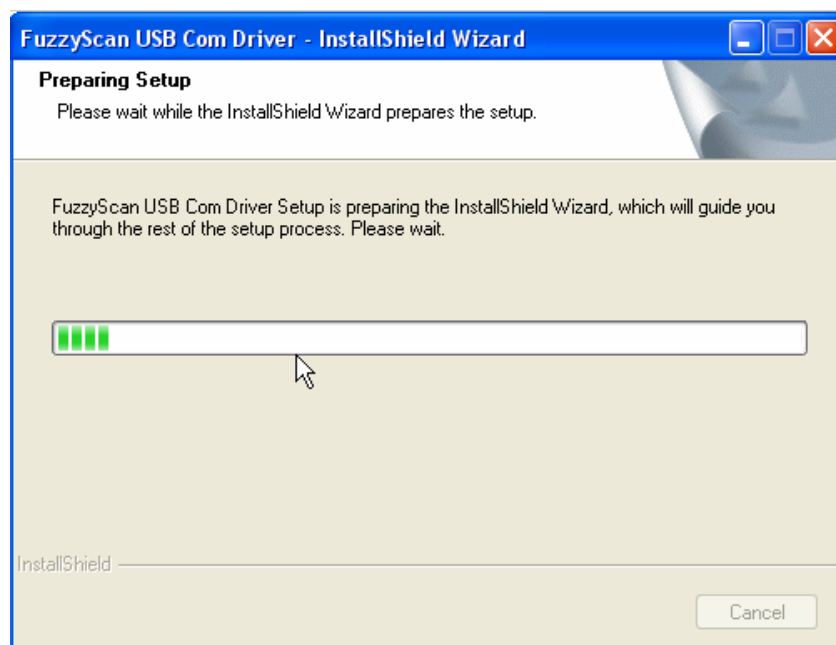
System requirements

One of the following operating systems must be fully installed and running on the system before installing this driver:

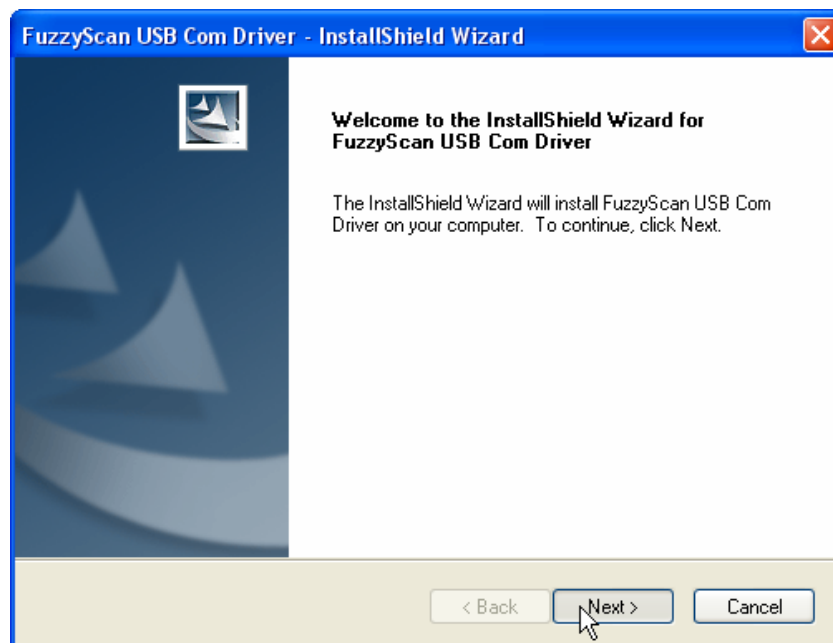
Windows 2000
Windows XP
Windows Vista

How to install Cino FuzzyScan Imager USB COM Port Emulation Driver

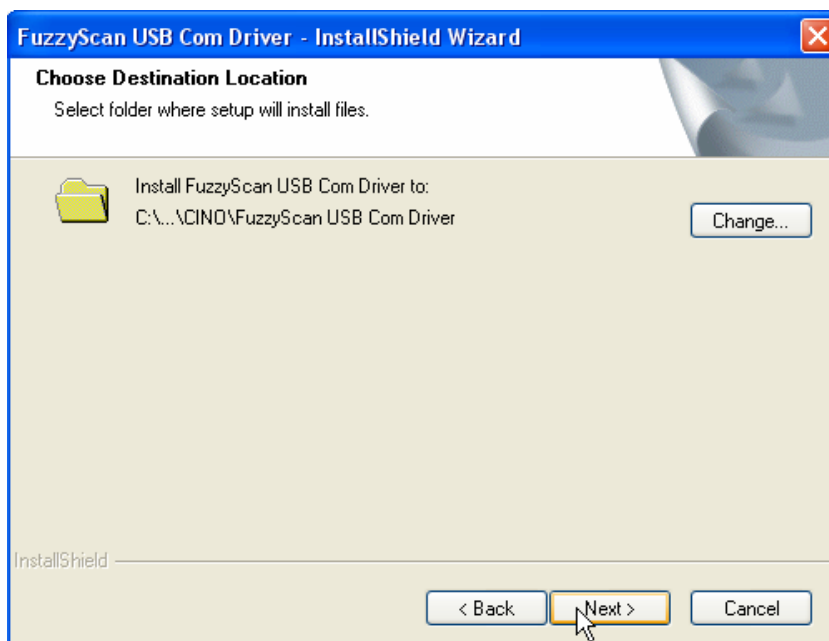
1. Verify all system requirements have been met.
2. Execute a self extracting program (CINO_USB3600_1.00.01.exe) downloaded from Cino WEB page.
3. Run the installation program by double click "CINO_USB3600_1.00.01.exe".
4. Please wait while the installshield wizard prepares the setup.



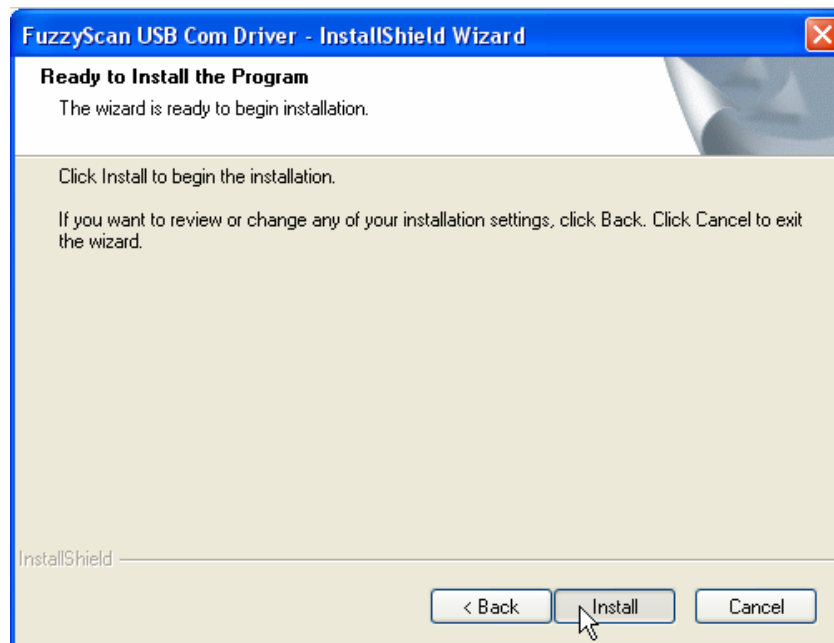
5. Click the "Next" to continue.



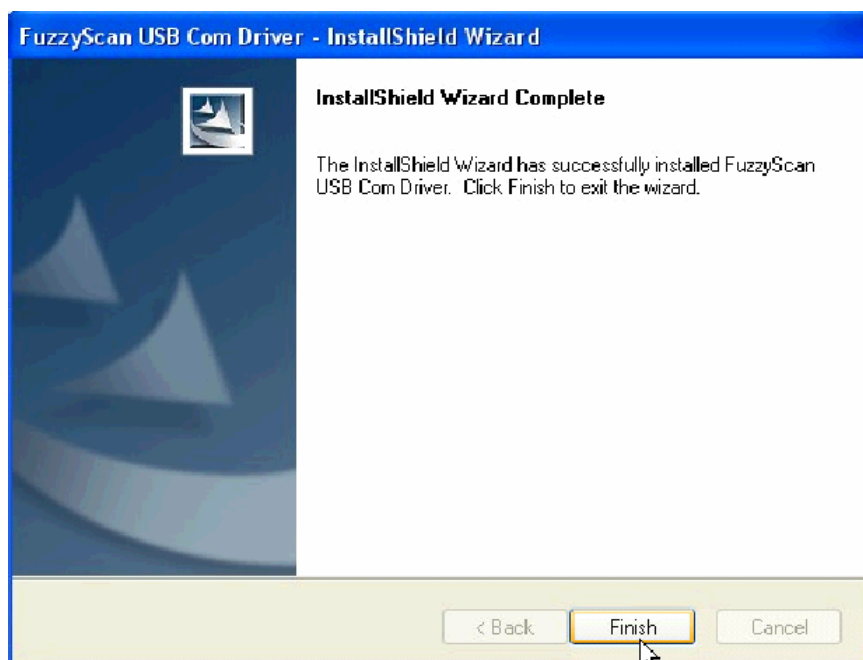
6. Select a specific location for installing the driver by clicking the "Change". If you don't want to change location, Please click the "Next" to continue.



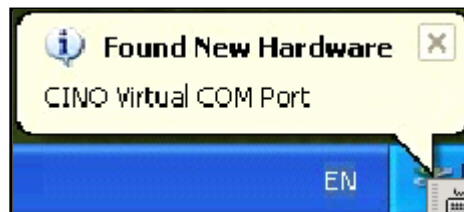
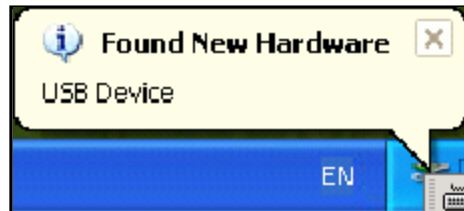
7. Click the "Install" to start the installation.



8. Click the "Finish" to complete the installation.



9. Plug the scanner into an open USB port and scan "USB Com Port Emulation" quick set command from FuzzyScan Quick Start Guide or Programming Manual. You will find following icons popping up from the lower right corner above the taskbar.



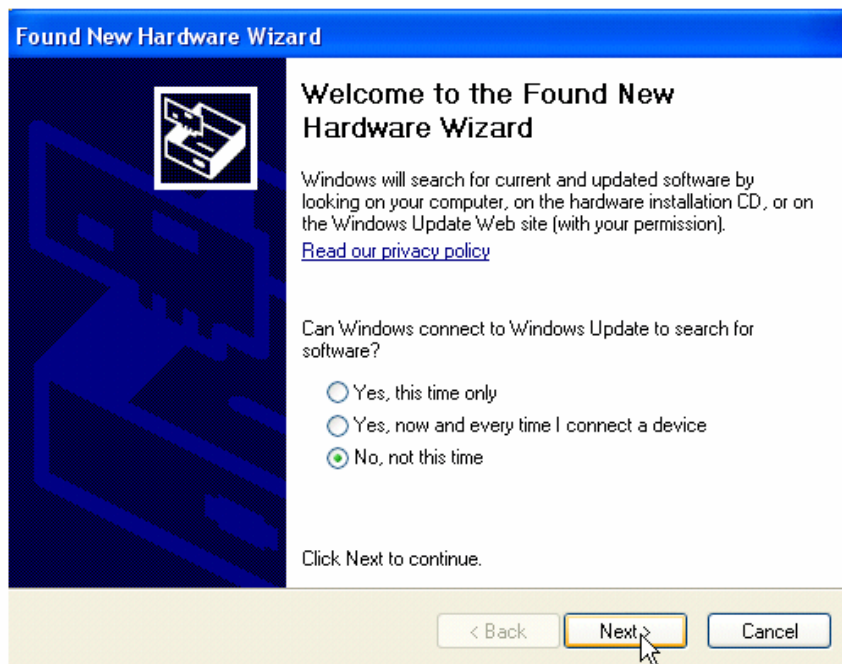
 If you found following indication popping up instead of above icons, please go to page 9/13 **When fail to complete the installation on Step 9** to continue the installation.



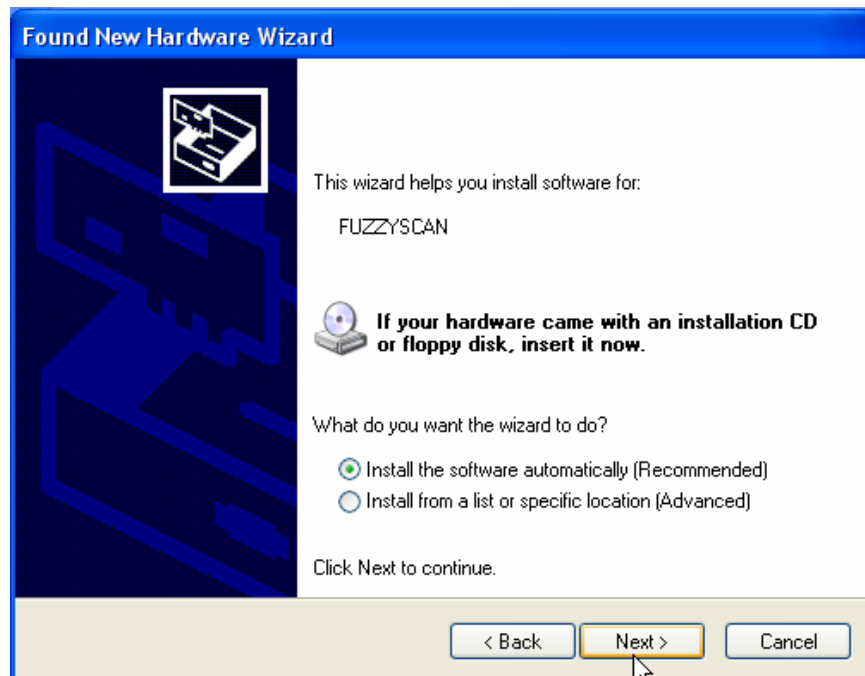
10. Click the "Continue Anyway".



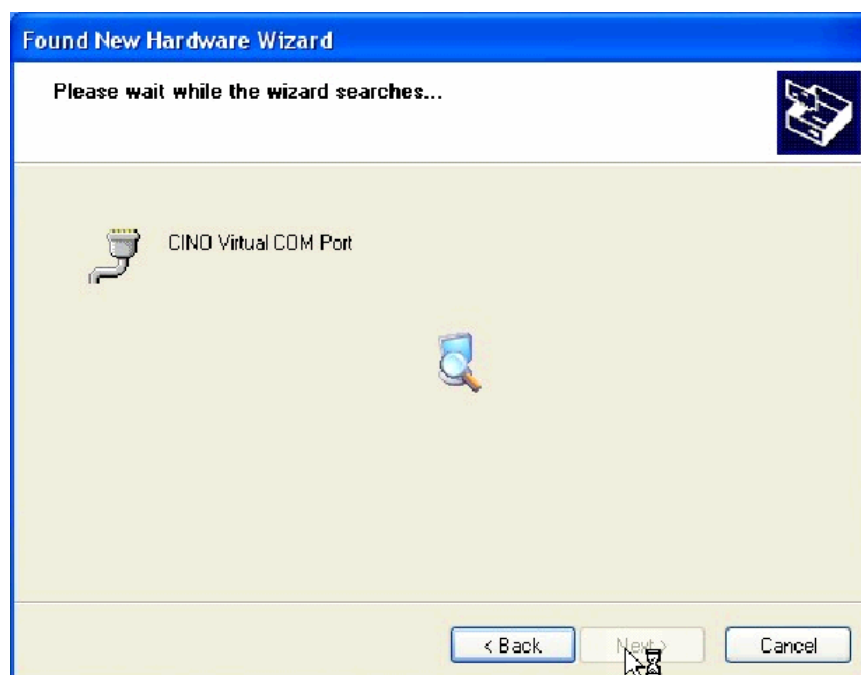
11. Select the "No, not this time" from the option then click the "Next".



12. Select the "Install the software automatically [Recommended]" from the option then click the "Next".



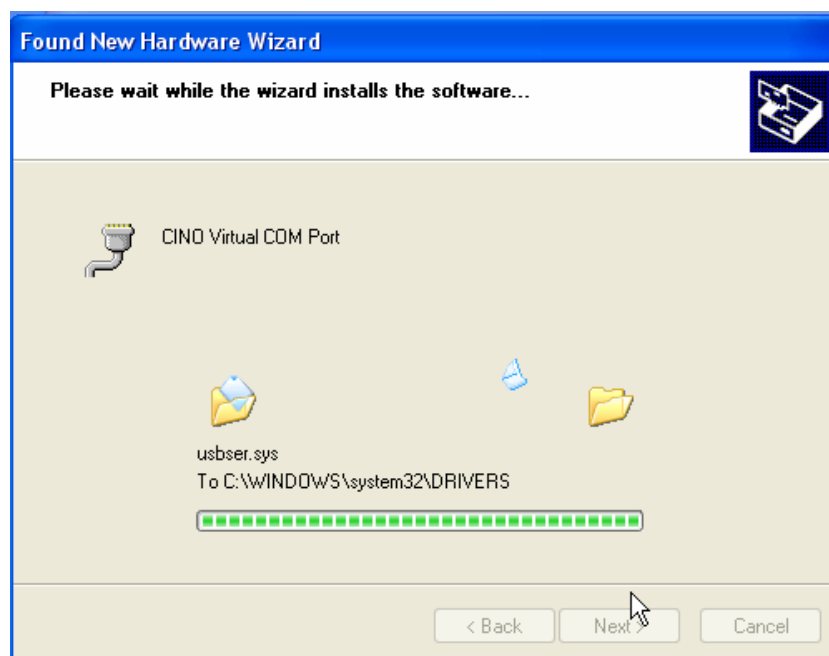
13. Please wait while the wizard searches.



14. Click "Continue Anyway".



15. Please wait while the wizard installs the software.



16. When the software installation is completed, click the "Finish".

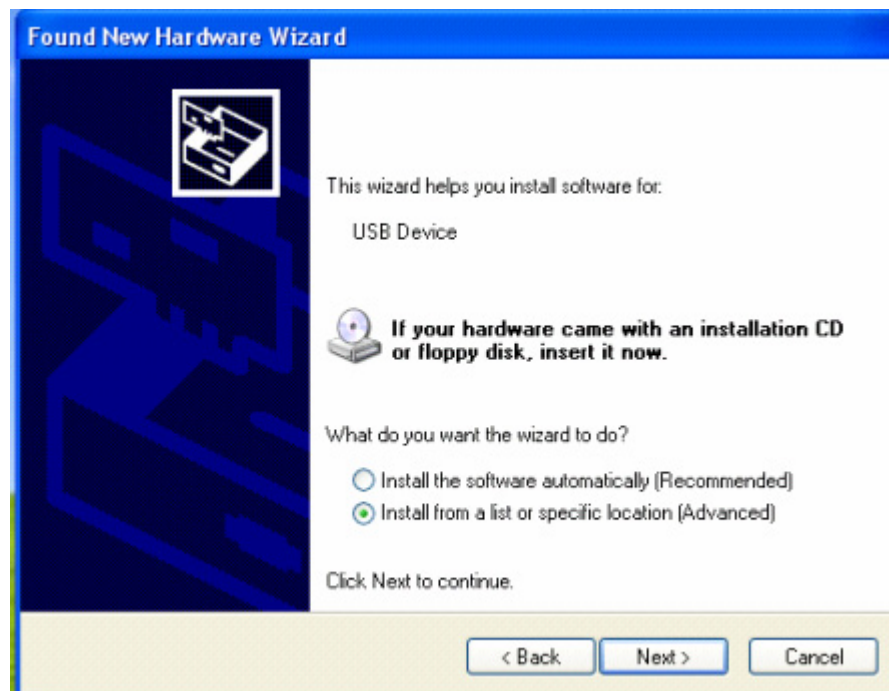


When fail to complete the installation on Step 9

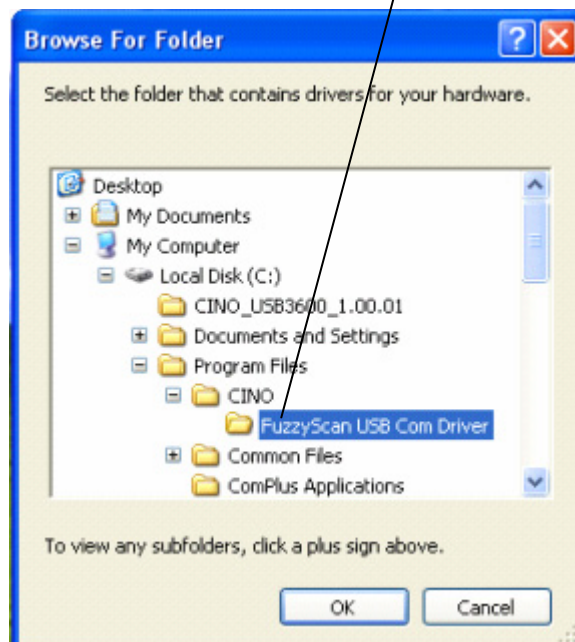
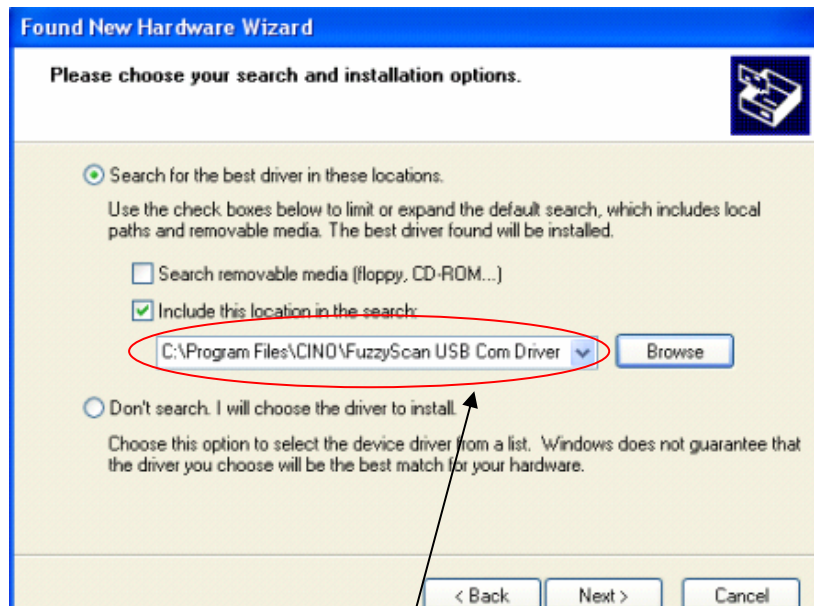
1. Select the "No, not this time" from the option then click the "Next".




2. Select the "Install from a list of specific [Advanced]" from the option then click the "Next".

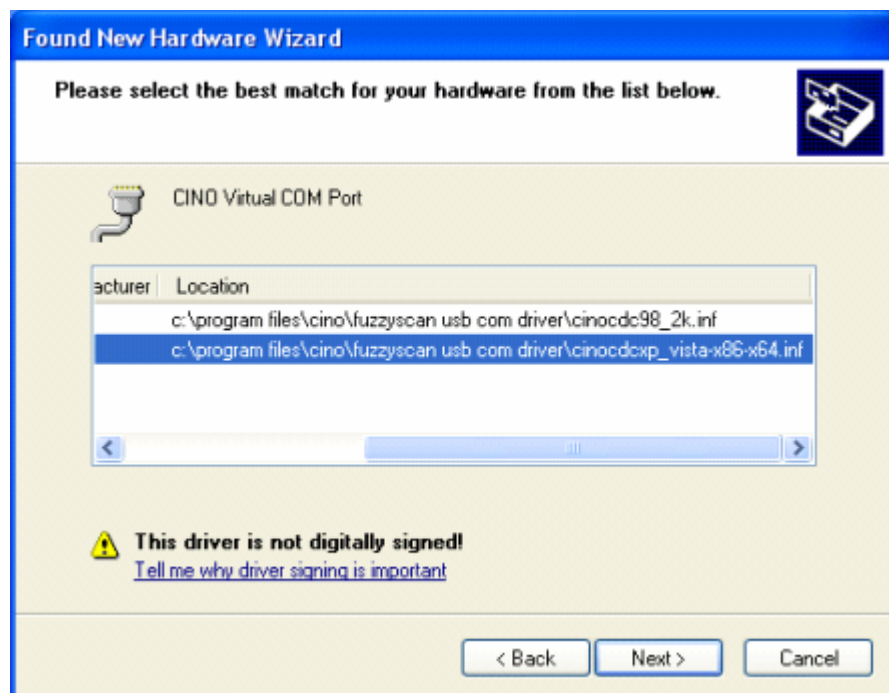


3. Select the "Search for the best driver in these locations" and check the "include this location in the search" from the option. Browse and choose the folder of "FuzzyScan USB Com Driver". Then click the "Next".



4. Please select the file then click the "Next".

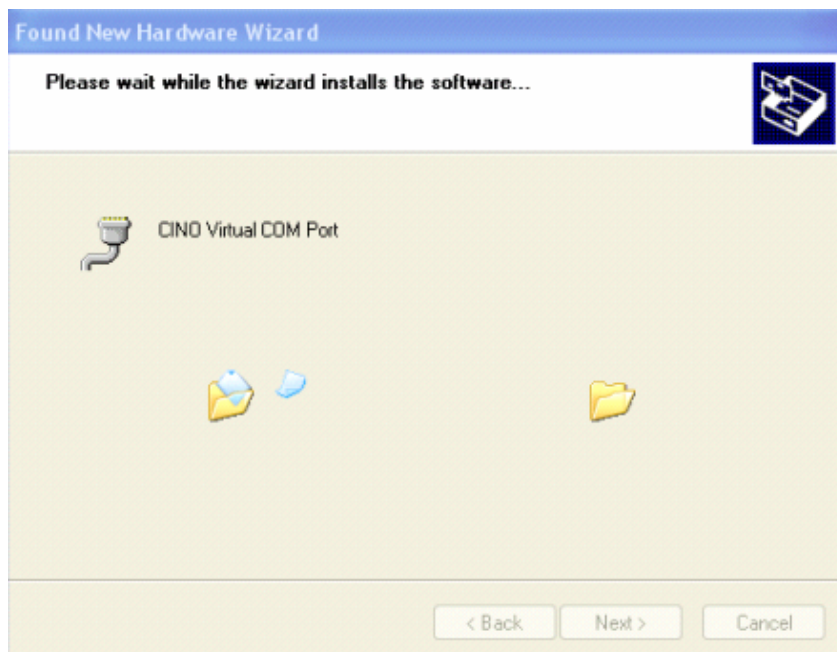
-  Please select cinocdc98_2k.inf for Windows 98/2000 or cinocdcxp_vista.x86x64.inf for Windows XP and Vista.



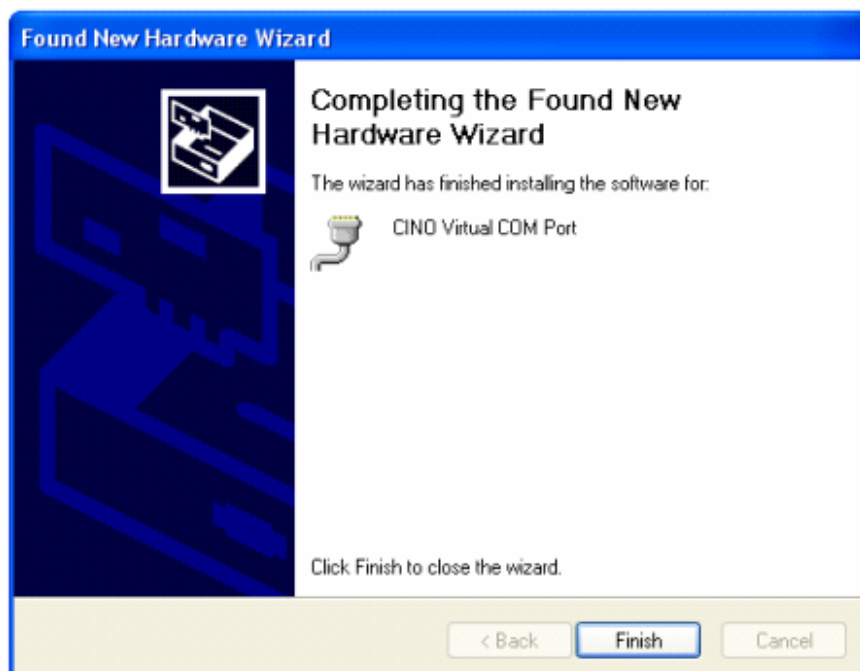
5. Click "Continue Anyway".



6. Please wait while the wizard installs the software.



7. When the software installation is completed, click the "Finish".



Verifying installation of the driver

This can be verified by the presence of a new communication virtual port (COM port) in Windows Device Manager under Ports (COM & LPT) while the scanner plugs into the PC. Please Go to control panel -> System, select Hardware tab, click Device Manager button, expand the Port (COM & LPT) node, you will see **CINO Virtual COM Port (COMx)**.

